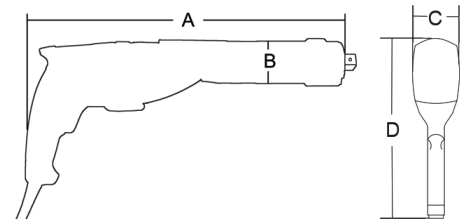


Electric Sensor-Controlled Series MED S

Our new electric torque wrench MED-S has a built-in torque sensor and shuts-off precisely by this sensor. Thereby the tool is insensitive to environment influences, such as friction, temperature or joint hardness. With this tool one can tighten bolts by category A according to VDI/VDE 2862-2.



- Sensor-controlled torque/angle shut-off
- Absolute accuracy $\pm 1,0\%$
- Torque Check Function
- Documentation System
- Angle torque wrench for hard-to-reach places (type MED 34-90-S)
- Multi-user level password protection
- Digital color display
- Digital setpoint adjustment
- Torque control in anticlockwise rotation reduces transmission damages
- Intelligent counter for life cycle and maintenance
- Selectable menu languages
- ProTight™ worker guidance system optional
- BoltPilot® optional



Type	Drive size	Torque [Nm]		RPM [min ⁻¹]	Weight [kg]	Dimensions [mm]			
		min.	max.			A	B	C	D
MED 6-S	3/4"	65	650	30	4,9	465	71	73	213
MED 14-S	3/4"	140	1.400	11	5,1	465	71	73	213
MED 14-90°-S	3/4"	140	1.400	13	5,6	211	71	73	397
MED 34-S	1"	340	3.400	4,2	7,0	510	84	84	220
MED 34-90°-S	1"	340	3.400	5,5	7,8	259	84	84	403
MED 45-S	1"	450	4.500	2	10,0	520	94	94	220
MED 80-S	1 1/2"	800	8.000	1,5	12,7	526	109	109	232
MED 110-S	1 1/2"	2.100	11.000	1	15,0	538	116	116	236

OPTIONS

- Version as a 120 V machine
- ProTight™ worker guidance system
- BoltPilot®

ACCESSORIES

Tool handle



Barcode scanner



Offset gearbox



Special reaction arm



Double safety trigger



SCOPE OF DELIVERY

- Electric sensor controlled MED-S
- Reaction arm with two retaining rings
- Documentation System
- Torque Check Function
- Calibration certificate
- Operation manual
- Tool case