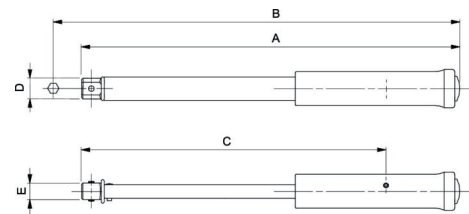


Manual Torque Wrenches Series 7465

The manual torque wrench series 7465 has a holder for insertion tools and is adjustable in a torque range of 1-1.500 Nm. The matching insertion tools can be purchased as accessories. The sizes 5-30 Nm have a double scale with the units Nm/ft.lb and Nm/lb.in. An audible and tactile clicking signals the reached torque. Due to the non-slipping metal handle the manual torque wrench rests comfortably in the hand and ensures easy and safe tightening as well as loosening of bolted connections.



- Manual torque wrench with holder for insertion tools
- Torque range 1-1.500 Nm
- Scale accuracy $\pm 4,0\%$
- Double scale in Nm/ft.lb and Nm/lb.in (sizes 5-30 Nm)
- Clockwise and anti-clockwise tightening
- Audible and tactile signal when torque is reached
- Non-slipping metal handle



Type	Drive size	Torque [Nm]		Weight [kg]	Dimensions [mm]				
		min.	max.		A	B	C	D	E
7465-5	9x12	1	5	0,36	235	253	190	25	18
7465-15	9x12	3	15	0,38	235	253	190	25	18
7465-30	9x12	6	30	1,022	277	295	227	25	18
7465-60	9x12	10	60	1,028	364	382	314	25	18
7465-100	9x12	20	100	1,035	370	389	320	25	18
7465-200	14x18	40	200	1,29	445	470	395	30	25
7465-340	14x18	60	340	1,5	585	610	535	30	25
7465-800	24x32	150	800	4,64	1.000	1.035	950	55	37
7465-1500	27x36	300	1.500	12,25	1.725	1.775	1.675	63	42

ACCESSORIES

Insertion tool with square shaft



Insertion tool with bit recording



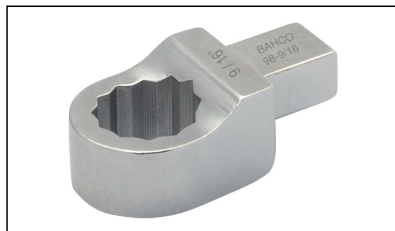
Square insertion tool



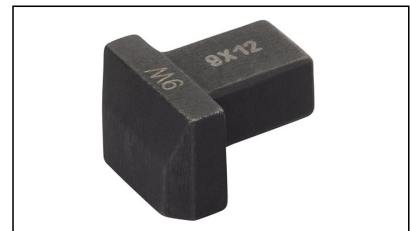
Spanner insertion tool



Ring wrench-insertion tool



Welding insertion tool



SCOPE OF DELIVERY

- Manual torque wrench 7465
- Calibration certificate
- Operation manual
- Plastic pipe (up to size 340 Nm) or tool case (from size 500 Nm)