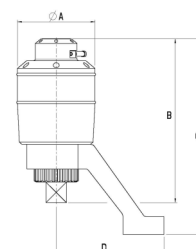


## Manual Torque Multiplier Series MX

- Manual torque multiplier with angeled reaction arm
- Torque range 100-16.000 Nm
- Display deviation  $\pm 4,0$  %
- Controlled tightening with manual torque wrench
- Loosening of bolts with little effort
- RS-anti backlash device (except MX 8, MX 18)



Type	Square		Maximum torque [Nm]	Gear ratio	Weight [kg]	Dimensions [mm]			
	drive	downforce				A	B	C	D
MX 8	1/2"	3/4"	800	1 : 3,5	1,3	65	105	132	130
MX 18	3/4"	1"	1.800	1 : 3,6	3,0	90	150	188	132
MX 28	1/2"	1"	2.800	1 : 13	5,2	95	200	240	132
MX 38	3/4"	1"	3.800	1 : 13	5,2	95	200	240	132
MX 50	3/4"	1 1/2"	5.000	1 : 17	7,0	120	215	272	150
MX 80	3/4"	1 1/2"	8.000	1 : 49	11,5	132	268	344	200
MX 120	3/4"	1 1/2"	12.000	1 : 58	14,0	156	272	348	200
MX 160	3/4"	2 1/2"	16.000	1 : 75	26,0	215	292	370	225

## OPTIONS

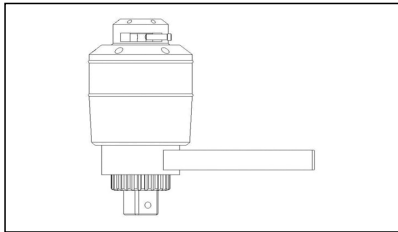
---

- Manual torque multiplier with little implementation and milled or alternatively forged housing

## ACCESSORIES

---

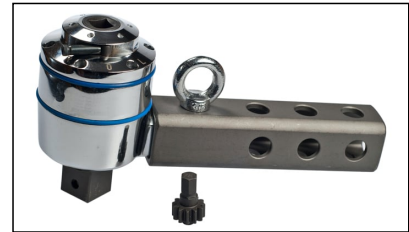
Straight support



Integrated support



Pipe support



## SCOPE OF DELIVERY

---

- Manual Torque Multiplier MX
- Inclined support
- Replacement-sheared pin
- Torque table
- Operation manual
- Tool case