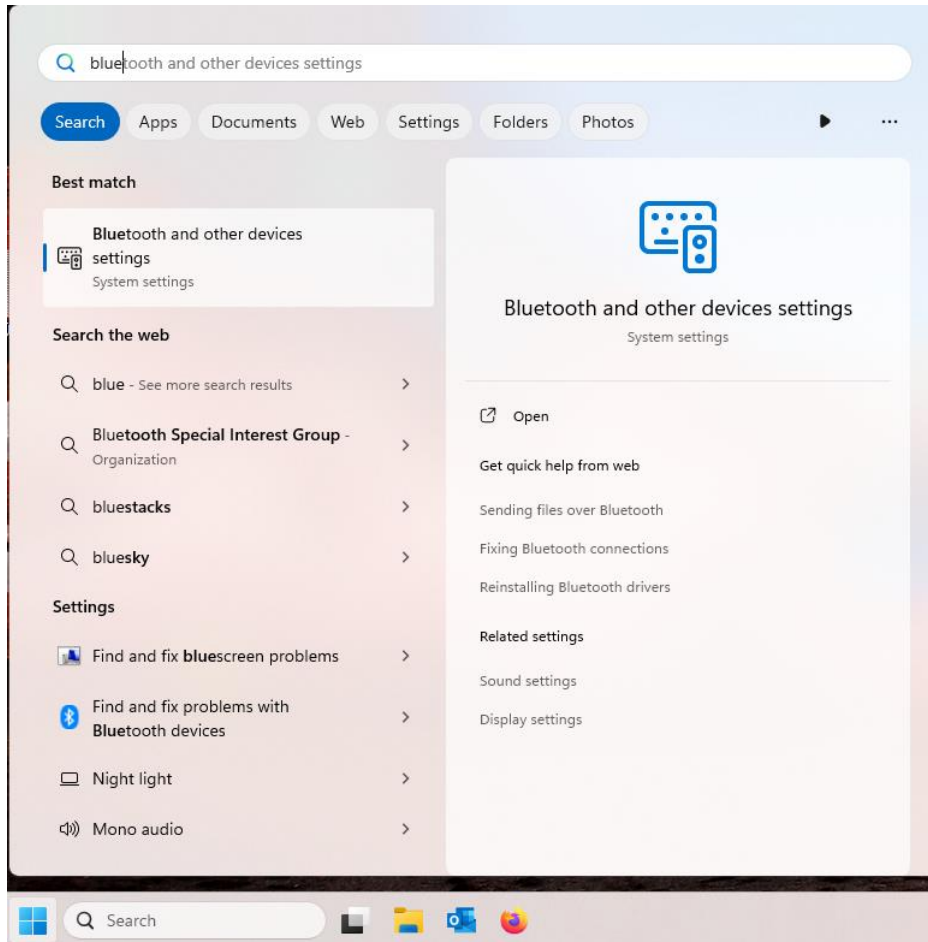


# Bluetooth connectivity with Windows Pro

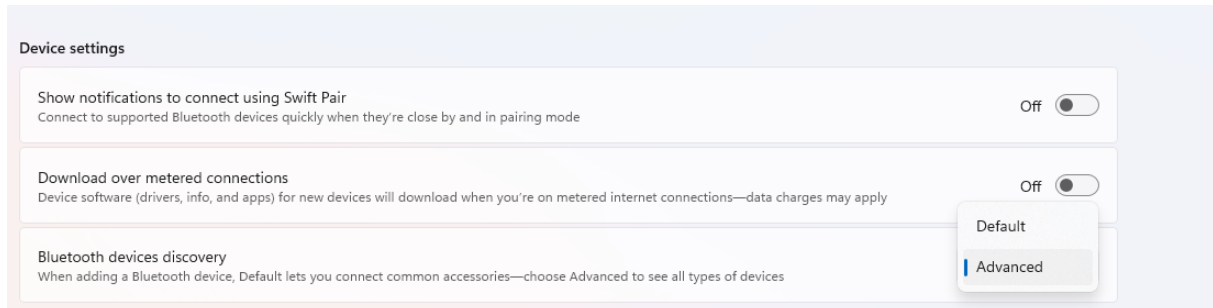


Put the battery onto the battery-powered torque wrench. Bluetooth is activated automatically.

On your PC press the start button and enter “Bluetooth and other devices settings”.



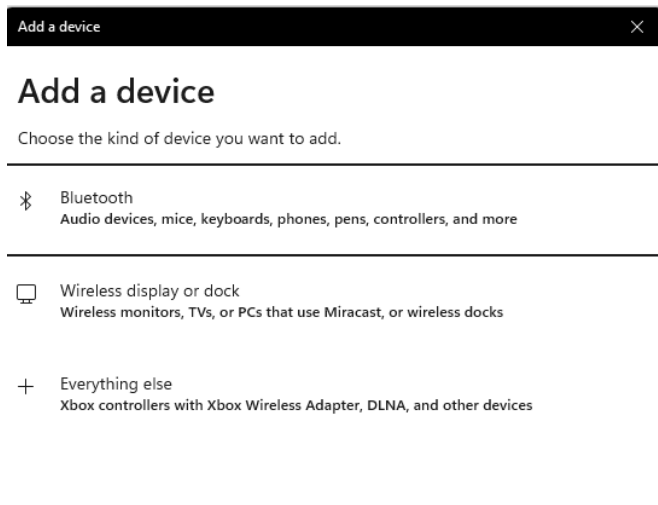
Scroll down to „Device settings” and choose the Bluetooth devices discovery item “advanced”.



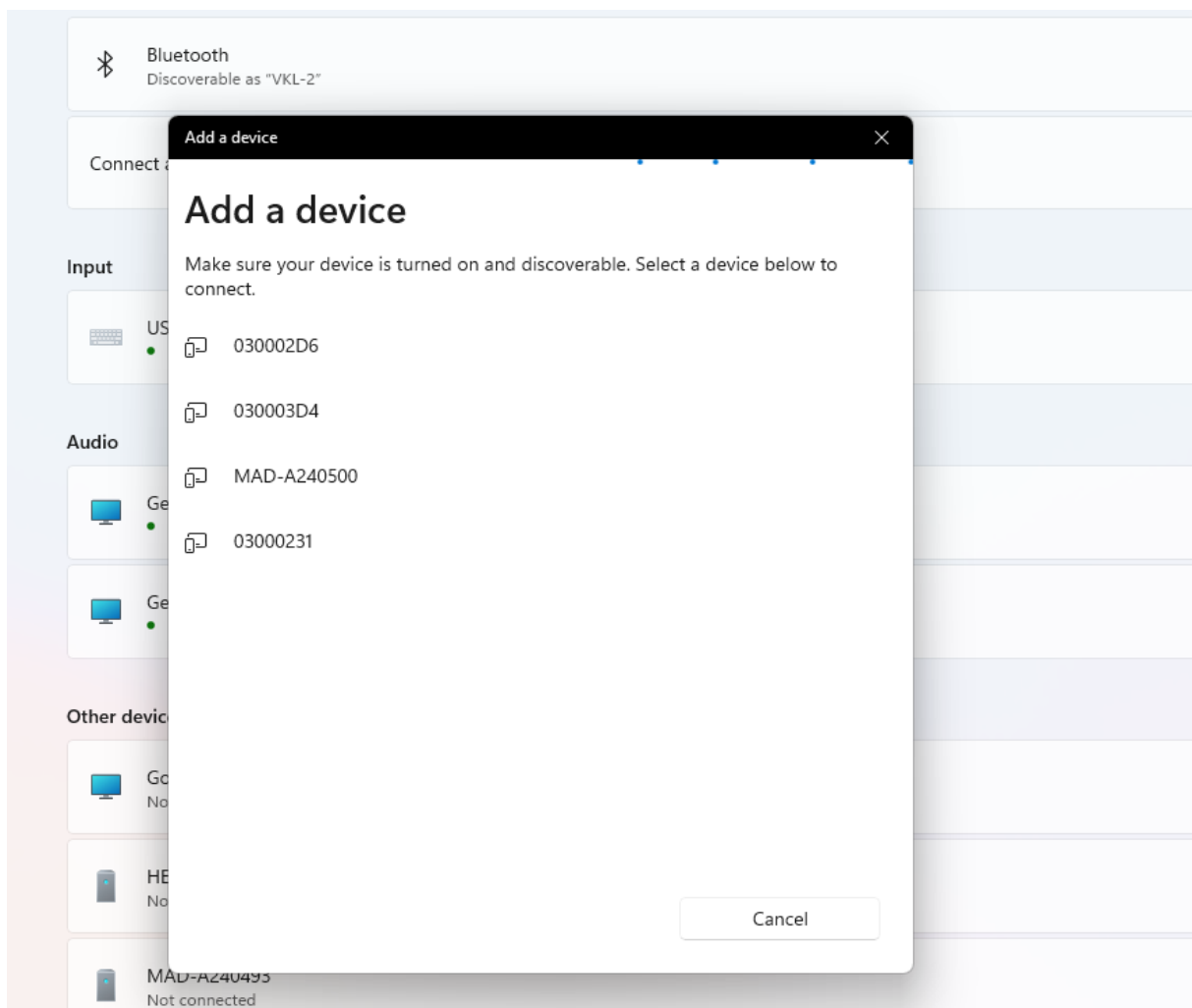
Press the blue button „Add device”.



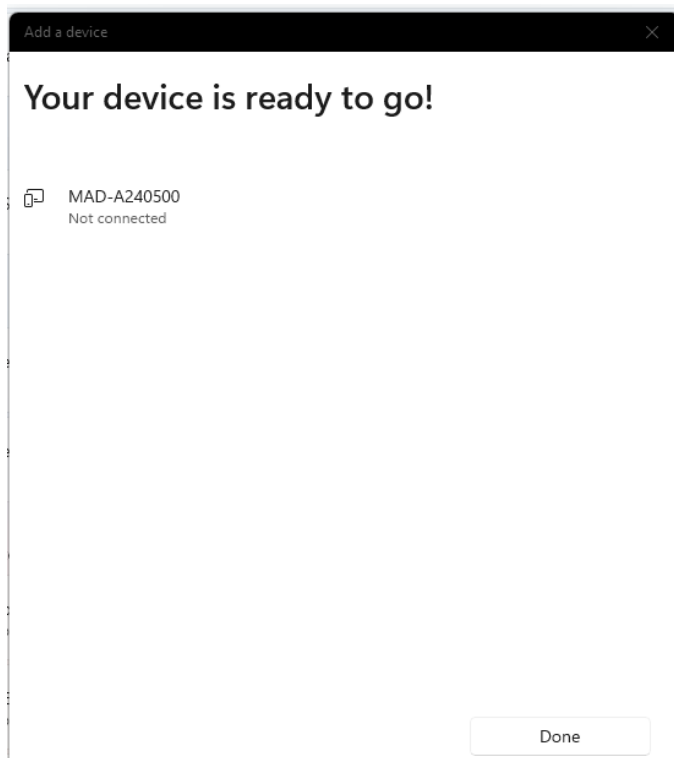
Select "Bluetooth".



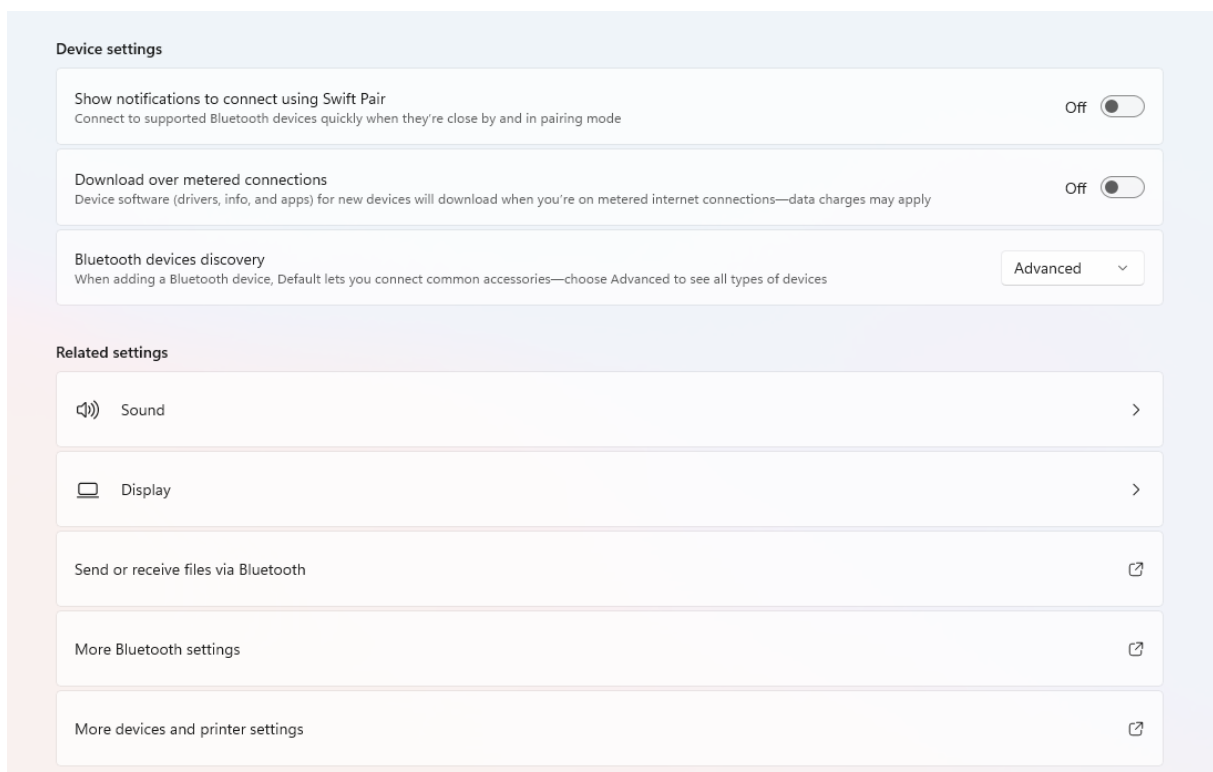
Choose the battery torque wrench (in this example: MAD-A240500)



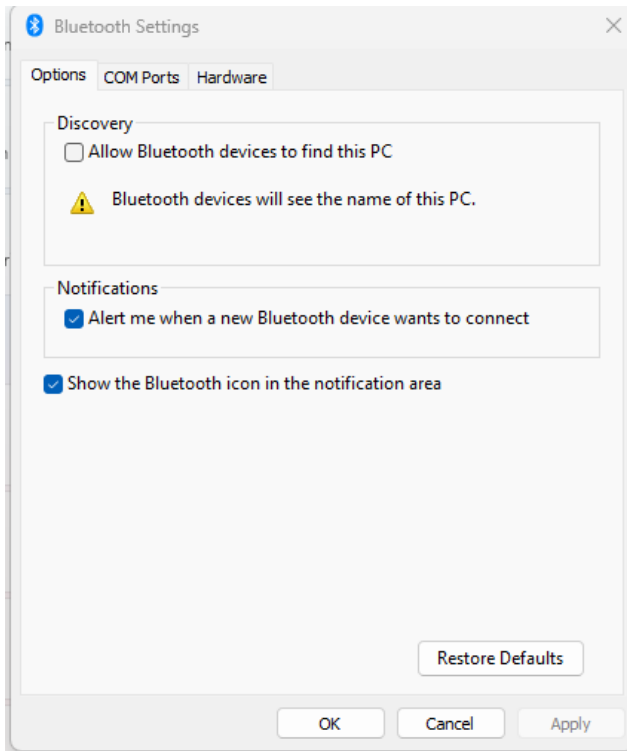
Confirm this window:



Scroll down to “Related settings” and choose the item “More Bluetooth settings”



A new window has been opened. Please select the tab "COM Ports"



Select your tool with the suffix 'SPP' and write down corresponding COM-port (in this example: COM15)

